



LODGE WATER OF LEITH

SLATEFORD, EDINBURGH, No. 1267

Installation of Office-Bearers

for 1970

and

Festival of St. John

IN SLATEFORD HALL,
ON 20th DECEMBER 1969

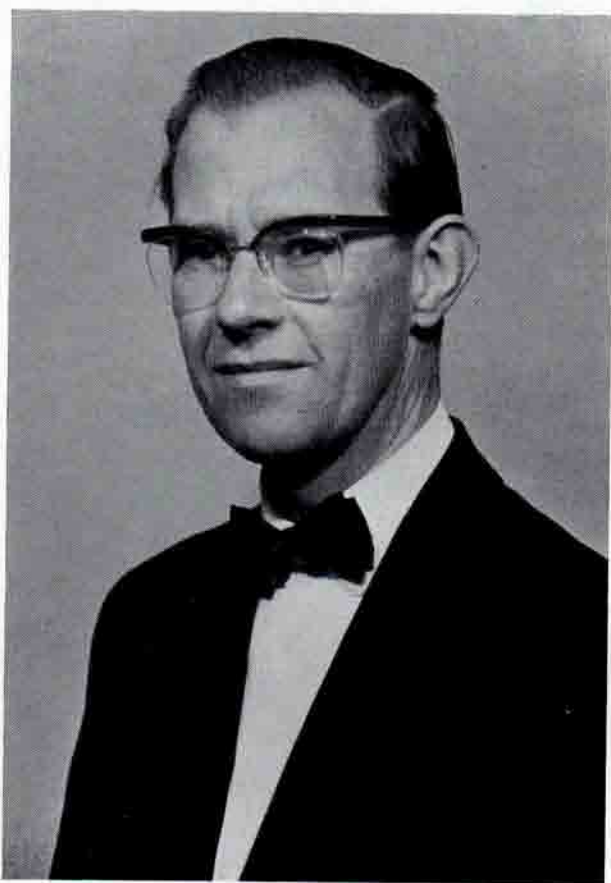
INSTALLATION AT 6 P.M.

DINNER AT 8 P.M.

INSTALLING MASTERS

BROTHER D. McANDREW, P.M.

„ C. B. SIMPSON, P.M.



Brother ROBERT A. SWANSON

Toast List

The Queen R.W.M.

The Grand Lodge of Scotland . . . Brother J. FOWLER, P.M.

Reply Brother J. R. NISBET,
Member of Grand Committee,
P.M., Edinburgh Academy Centenary Lodge, No. 1327

Collection for Grand Lodge Benevolent Funds

INTERVAL

The Installing Master R.W.M.

Reply Brother D. McANDREW, P.M.

Visiting Brethren Brother C. URQUHART, S.W.

Reply Brother R. B. METHVEN, R.W.M.
Lodge Meridian, No. 1609

The Right Worshipful Master . . . Brother I. F. IRVINE, I.P.M.

Reply R.W.M.

Remaining Office-Bearers Brother J. WADDELL, P.M.

Reply Brother J. WATSON, D.M.

Artistes and Stewards Brother A. DICKSON, P.M.

Reply Brother J. GORMLEY, R.W.M.
Scotia Regia 1345

The Tyler's Toast Brother J. AITKEN

AULD LANG SYNE

PAST MASTERS

<p>*Bro. DAVIDSON SCOTT. . . 1921-22 * " GEO. B. BORTHWICK . . . 1923 * " JAMES S. STEWART . . . 1924 * " R. B. T. HUTTON . . . 1925 * " JAMES FLEMING . . . 1926 * " JAMES S. CLARKSON . . . 1927 * " W. A. McDOUGALL . . . 1928 * " A. C. HENRY . . . 1929-30 * " A. ROBERTSON . . . 1931 * " JOHN C. NOTMAN . . . 1932 * " JAMES FLEMING . . . 1933-34 * " A. WILLIAMSON . . . 1935 * " A. MORRISON . . . 1936 * " D. MCK. R. MELROSE . . . 1937 * " J. RODGERS . . . 1938 * " T. GRAHAM . . . 1939-40-41 * " J. FLEMING . . . 1942 * " W. SCULAR . . . 1943-44 * " A. DEANS . . . 1945 * " A. W. MAVOR . . . 1946 " W. HOOD . . . 1947</p>	<p>*Bro. J. RICHARDSON . . . 1948 * " W. STEWART . . . 1949 * " F. F. ADAM . . . 1950 * " C. B. SIMPSON . . . 1951 * " C. F. GUY . . . 1952 * " G. DEANS . . . 1953 " CHARLES GRAY . . . 1954 " H. F. DARLING . . . 1955 " D. CAMERON . . . 1956 " A. S. THOMSON . . . 1957 * " J. BENNETT . . . 1958 " W. BROWN . . . 1959 " J. FOWLER . . . 1960 " T. G. SUTHERLAND . . . 1961 " D. McANDREW . . . 1962 " C. B. SIMPSON . . . 1963 " J. WADDELL . . . 1964 * " S. RIGBY . . . 1965 " A. P. DICKSON . . . 1966 " R. R. D. RICHARDS . . . 1967 " D. W. BENNETT . . . 1968</p>
--	---

* Deceased

OFFICE-BEARERS

Bro. R. A. SWANSON	<i>R.W.M.</i>	Bro. A. P. DICKSON, P.M.	<i>D. of C.</i>
" J. B. W. WATSON	<i>D.M.</i>	" J. AITKEN	<i>Tyler</i>
" J. W. FAIRLEY	<i>S.M.</i>	" WM. MORRIS	<i>Chaplain</i>
" C. URQUHART	<i>S.W.</i>	" S. HANCOCK	<i>Architect</i>
" S. WHEELER	<i>J.W.</i>	" T. T. GORDON	<i>Jeweller</i>
" D. W. BENNETT, P.M.	<i>Secy.</i>	" H. LAX	<i>Bible Bearer</i>
" J. FOWLER, P.M.	<i>Treas.</i>	" N. WOOD	<i>D. of M.</i>
" WM. BROWN, P.M.		" M. HUME	<i>Bard</i>
	<i>Asst. Secy./Treas.</i>	" W. MANSON	<i>Standard Bearer</i>
" J. WADDELL, P.M.	<i>Almoner</i>	" D. SPENCE	<i>C.S.</i>
" T. PONTON	<i>S.D.</i>	" F. SIMMONDS	<i>P. of S.</i>
" W. MONCUR	<i>J.D.</i>	" J. CRICHTON	<i>Organist</i>
" E. BROTHERSTON	<i>Imm. Guard</i>		

MANAGEMENT COMMITTEE

Bro. A. HUMPHREYS	Bro. J. HOOD
" W. HOOD	" R. LITTLE
" D. YOUNG	" J. SHEPHERD

ENQUIRY COMMITTEE

Bro. D. McANDREW, P.M.	Bro. J. WADDELL, P.M.
------------------------	-----------------------